



FOR SALE OR DEVELOPMENT | Highway 290 Industrial Land

2004 Moore-Duncan Hwy
\$55,000/acre

Spartanburg County | Moore, South Carolina 29369

- > ±178 acres
- > Tax Map #s: 6-39-00-033.00
- > Moore, Spartanburg County
- > All utilities on-site or adjacent to park
- > ±8 miles from I-85
- > ±1.5 miles from I-26
- > ±15 miles to Inland Port Greer
- > ±16 miles to GSP International Airport

Contact us:

Garrett Scott, SIOR

Vice President

+1 864 527 5453

garrett.scott@colliers.com

John Montgomery

Vice President

+1 864 527 5422

john.montgomery@colliers.com

Brockton Hall

Brokerage Associate

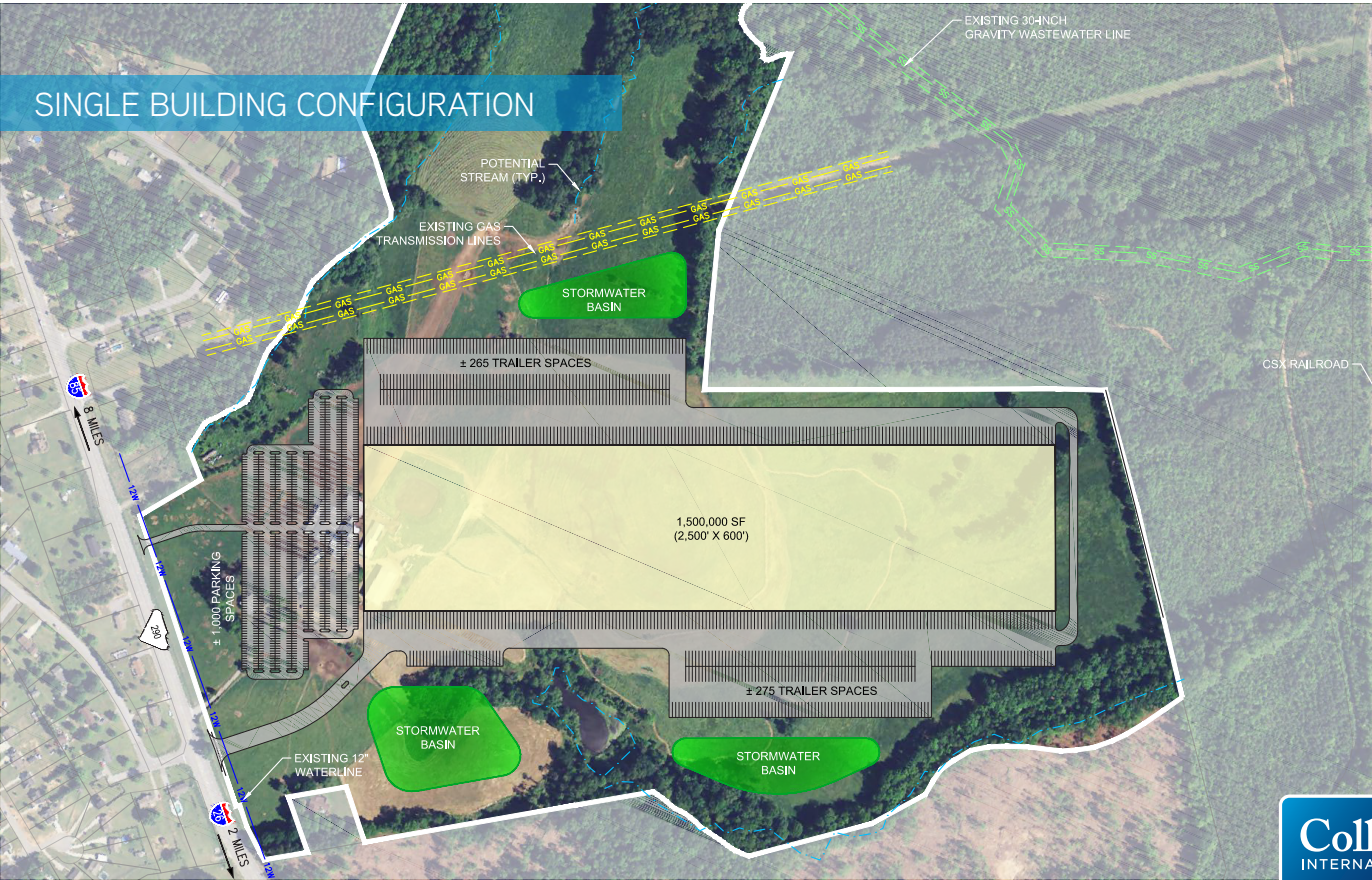
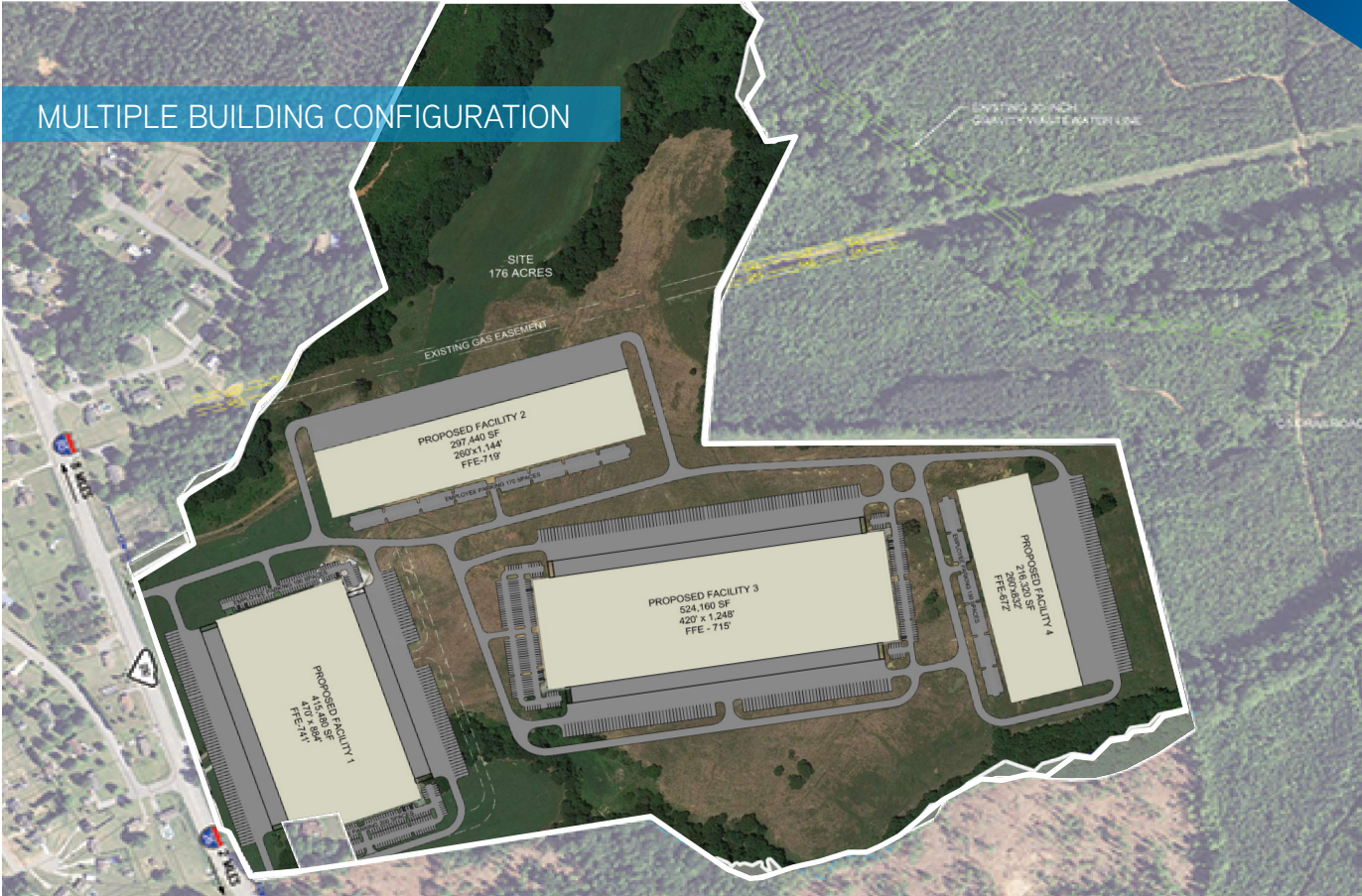
+1 864 527 5441

brockton.hall@colliers.com



Colliers International
145 W Main Street | Suite 300
Spartanburg, SC 29306
P: +1 864 297 4950

This document has been prepared by Colliers International for advertising and general information only. Colliers International makes no guarantees, representations or warranties of any kind, expressed or implied, regarding the information including, but not limited to, warranties of content, accuracy and reliability. Any interested party should undertake their own inquiries as to the accuracy of the information. Colliers International excludes unequivocally all inferred or implied terms, conditions and warranties arising out of this document and excludes all liability for loss and damages arising there from. This publication is the copyrighted property of Colliers International and/or its licensor(s). ©2017. All rights reserved.





REGIONAL OVERVIEW



In less than a decade, companies have invested more than \$9 billion in capital in the Upstate, creating 35,000 jobs.



More than 375 companies, representing 32 countries, are represented in this area.



Opened in 2013, the Inland Port Greer provides shippers access to more than 95 million consumers within a one-day drive.



Spartanburg County – home to the largest BMW manufacturing facility in the world, as well as a new \$1.4 billion plant from carbon fiber giant Toray Industries – is the epicenter for this economic boom.



Population
(2017)
305,813



Projected Population
(2020)
321,408



Average Household Income (2017)
\$61,892



Industrial Vacancy Rate (Q1 2018)
Greenville-Spartanburg-Anderson
5.81%